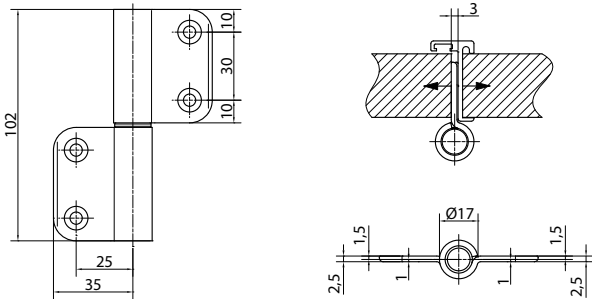


# Stainless steel butt hinge SYS-ES28-1



## Technical facts

Size:	102,0 mm
Knuckle diameter:	17 mm
Hinge pin diameter:	12 mm
Hinge pin:	Stainless steel
Spring core:	Sleeve: brass, Spring: spring steel
	Stainless steel spring (additional charge)
Recommended fixation:	Counter-sunk screw 4,5 x 65 mm (not included)
Packing unit:	40 hinges



## Tender specification

SYSKO-Stainless steel butt hinge Type: SYS-ES28-1 for unrebated partition walls  
 2-parts butt hinge for fixation to door-narrow-side without cutout  
 Hinge surface ground stainless steel  
 Available as standard hinge (ES28-1S) or spring hinge (ES28-1F)  
 Unhinge safety for spring hinge (additional charge)

Article	Description	Order number
ES28-1S DIN L	Standard hinge ground stainless steel	84ES281SL
ES28-1S DIN R	Standard hinge ground stainless steel	84ES281SR
ES28-1F DIN L	Spring hinge ground stainless steel	84ES281FL
ES28-1F DIN R	Spring hinge ground stainless steel	84ES281FR
Additional charge	Unhinge safety for spring hinge	MP84AUSH
Additional charge	Sleeve: brass, Spring: stainless steel	MP84FKFES102

## Notes

---

---

---

---

---

---

---

---

---

---