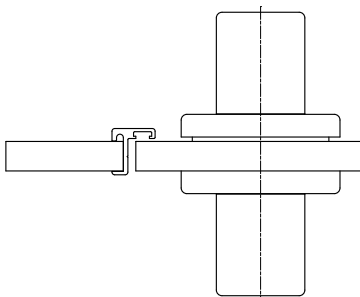
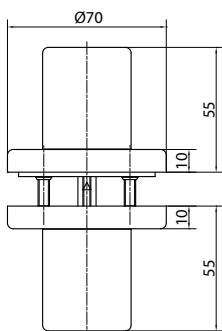


# Latch system Combination IV



## Technical facts

- Type: VEV IV aluminium anodised  
 VEV IV aluminium powder-coated (11 colours – colour chart enclosed)  
 VES IV ground stainless steel
- Design: Both-sided fixed knob with rosette, without indicator
- Locking type: Without function, only handle
- Door thickness: From 10 mm door thickness (variable without additional charge)



Article	Description	Order number
VEV IV	Latch system Combination IV aluminium anodised	82VEV4*
VEV IV	Latch system Combination IV aluminium powder-coated (11 colours - colour chart enclosed)	82VEV4_ _ _ _ _* (Please specify RAL no.!)
VES IV	Latch system Combination IV ground stainless steel	82VES4*

\*Please provide information about the thickness of the door leaf with your order.

## Notes

---

---

---

---

---

---

---

---

---

---