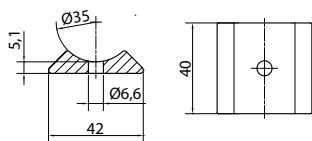


Technical facts

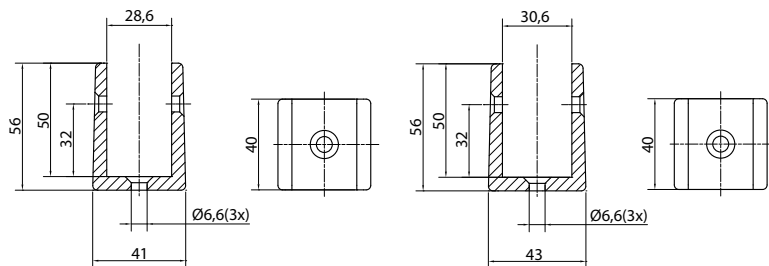
Tube adapter for U-clamp 28/30:



For U-clamp 28 mm and 30 mm
 Aluminium raw
 Aluminium anodised
 Aluminium powder-coated

U-clamp 28/30:

For 28 mm and 30 mm
 With through-hole
 Aluminium raw
 Aluminium anodised
 Aluminium powder-coated
 Fixation accessories (additional charge)



Article	Description	Order number
Tube adapter for U-clamp 28/30	Aluminium raw	81BDSRR280
Tube adapter for U-clamp 28/30	Aluminium anodised	81BDSRR28EV
Tube adapter for U-clamp 28/30	Aluminium powder-coated (11 colours - find colour chart enclosed)	81BDSRR28_ _ _ _ (Please specify RAL no.!)
U-clamp 28	Aluminium raw	81BDSUK280
U-clamp 28	Aluminium anodised	81BDSUK28EV
U-clamp 28	Aluminium powder-coated (11 colours - find colour chart enclosed)	81BDSUK28_ _ _ _ (Please specify RAL no.!)
Additional charge	Sleeve nut and screw (steel galvanised 28 mm) incl. screw cover	MP83SWSS28
Additional charge	Sleeve nut and screw (stainless steel 28 mm) incl. screw cover	MP83SWSES28
U-clamp 30	Aluminium raw	81BDSUK300
U-clamp 30	Aluminium anodised	81BDSUK30EV
U-clamp 30	Aluminium powder-coated (11 colours - find colour chart enclosed)	81BDSUK30_ _ _ _ (Please specify RAL no.!)
Additional charge	Sleeve nut and screw (steel galvanised 30 mm) incl. screw cover	MP83SWSS30
Additional charge	Sleeve nut and screw (stainless steel 30 mm) incl. screw cover	MP83SWSES30

Notes
