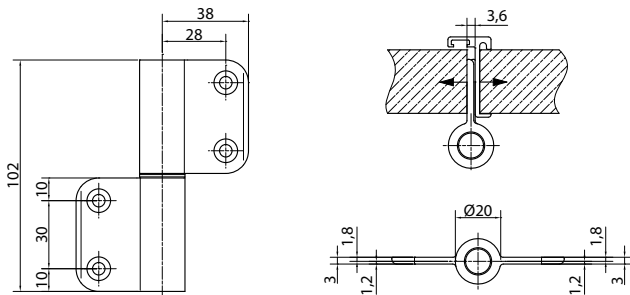


Aluminium butt hinge SYS-AL28-1



Technical facts

Size:	102,0 mm
Knuckle diameter:	20 mm
Hinge pin diameter:	12 mm
Hinge pin:	Steel galvanised
	Stainless steel (additional charge)
Spring core:	Sleeve: steel galvanised, Spring: spring steel
	Stainless steel (additional charge)
Recommended fixation:	Counter-sunk screw 5 x 65 mm (not included)
Packing unit:	40 hinges



Tender specification

SYSKO-Aluminium butt hinge Type: SYS-AL28-1 for unrebated partition walls
 2-parts butt hinge for fixation to door-narrow-side without cutout
 Hinge surface aluminium anodised or powder-coated
 Bush bearing in nylon to guide hinge pins
 Available as standard hinge (AL28-1S) or spring hinge (AL28-1F)
 Unhinge safety for spring hinge (additional charge)

Article	Description	Order number
AL28-1S DIN L	Standard hinge aluminium anodised	84AL281SEVL
AL28-1S DIN R	Standard hinge aluminium anodised	84AL281SEVR
AL28-1F DIN L	Spring hinge aluminium anodised	84AL281FEVL
AL28-1F DIN R	Spring hinge aluminium anodised	84AL281FEVR
AL28-1S DIN L	Standard hinge powder-coated (11 colours - colour chart enclosed)	84AL281S____L (Please specify RAL no.!)
AL28-1S DIN R	Standard hinge powder-coated (11 colours - colour chart enclosed)	84AL281S____R (Please specify RAL no.!)
AL28-1F DIN L	Spring hinge powder-coated (11 colours - colour chart enclosed)	84AL281F____L (Please specify RAL no.!)
AL28-1F DIN R	Spring hinge powder-coated (11 colours - colour chart enclosed)	84AL281F____R (Please specify RAL no.!)
Additional charge	Hinge pin in stainless steel	MP84BSES102
Additional charge	Unhinge safety for spring hinge	MP84AUSH
Additional charge	Spring core, spring and sleeve in stainless steel	MP84FKES102

Notes
